

14585A Control and Analysis Software for Advanced Power Supplies

N6705C DC power analyzer mainframe

- All N6700 Series DC power modules

Advanced Power System N7900 Series dynamic DC power supplies

- N7950A-N7977A with or without N7909A power dissipater unit(s)

RP7900 Series Regenerative Power System

- RP7931A - RP7963A



Easily Access Your Power Supply's Advanced Sourcing and Measurement Features

The Keysight Technologies, Inc. 14585A control and analysis software for advanced power supplies was designed to give you fast and easy access to the advanced sourcing and measurement functionality of your N6705 DC power analyzer, RP7900 Series Regenerative Power System, and/or Advanced Power System (APS) N7900 Series power supplies without any programming. It is a flexible R&D tool for any application. It can control any of the N6700 family's more than 30 DC power modules when installed in a N6705 mainframe, any of the RP7900 Series' 16 models, as well as any of the APS N7900 Series' 12 models. When used to control an N6781A SMU, it can be used for advanced battery drain analysis applications.

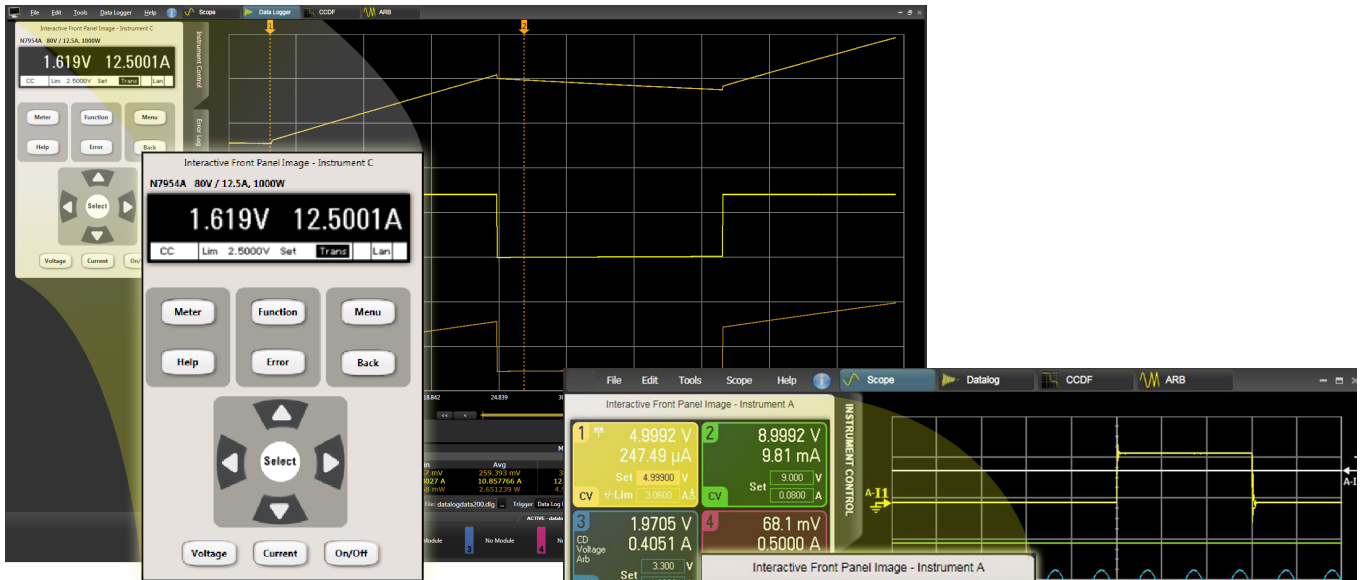
Compare features

N6705C DC Power Analyzer	Advanced Power System N7900 Series RP7900 Series Regenerative Power System
<ul style="list-style-type: none">- Complements the N6705 DC power analyzer's front panel controls- Controls and analyzes data from up to four N6705 DC power analyzer mainframes and any installed modules at once – that's up to 16 power supplies simultaneously.- Controls any of the more than 30 N6700 DC power modules when installed in the N6705 DC power analyzer	<ul style="list-style-type: none">- Provides easy access to the advanced features of the N7900 or RP7900 without any programming- Controls and analyzes data from up to four N7900 Advanced Power System or RP7900 Series Regenerative Power System models
<ul style="list-style-type: none">- Control any combination of four N6705, N7900 or RP7900 models- Four modes of operation: scope (short-term waveform capture), data logger (long-term waveform capture), CCDF (statistical analysis), and ARB (waveform creation)- Enhanced control and analysis of data – use familiar PC controls and large display- Graphical user software – no programming required- Accurately capture current drain measurements from seconds to days at up to 200,000 measurements per second (in scope mode) directly to a PC- Advanced marker readout (min, avg, max, RMS, peak-to-peak, charge/energy)- Easily create complex waveforms to stimulate or load a DUT by inputting a formula, choosing from built-in waveforms or importing waveform data- Data log measurements directly to a PC- Export data to a Microsoft Excel spreadsheet or text file- Capture a waveform, then “play” it back – use scope or data logger to capture a waveform, then use the power supply's source/sink function to reproduce it- Apply mathematic functions to waveforms- Name and choose colors for waveform traces for easy identification- Perform statistical analysis (CCDF) of power consumption	

Free
30-day
trial!

Control

Access all the features of the power supply you are connected to via a virtual front panel of the instrument or the scope, data logger, CCDF, or ARB features of the software.



14585A connected to an N7954A

Measurements: Scope and data logger modes

Setup short-term measurements using scope mode or long-term measurements using data logger mode to gain insights into your device's power consumption quickly and easily. If you know how to use an oscilloscope, you'll find the software easy and intuitive to use.



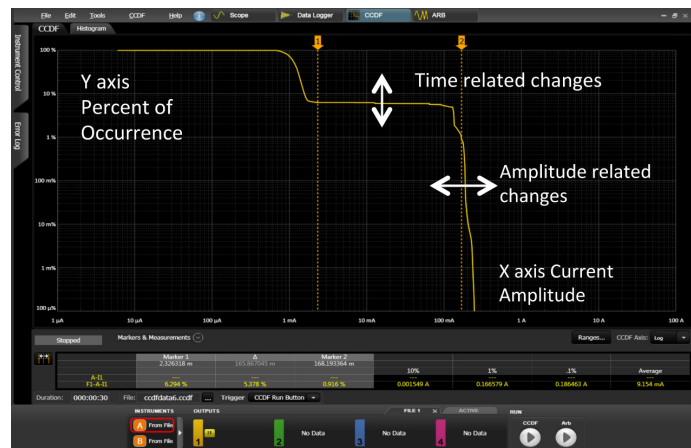
14585 connected to an N6705 with four DC power modules installed

Statistical analysis CCDF mode

To help you analyze distribution profiles, the 14585A software includes a complementary cumulative distribution function (CCDF).¹

This function provides a concise way to display long-term dynamic random current drain. It is also an effective way to quantify the impact of design changes—hardware, firmware or software—on current flows in your device.

1. The CCDF value equals (1 - CDF) and the CDF is the area under the probability density function (PDF) curve. Because the CDF ranges from 0 to 100 percent probability, the CCDF ranges from 100 to 0 percent probability.

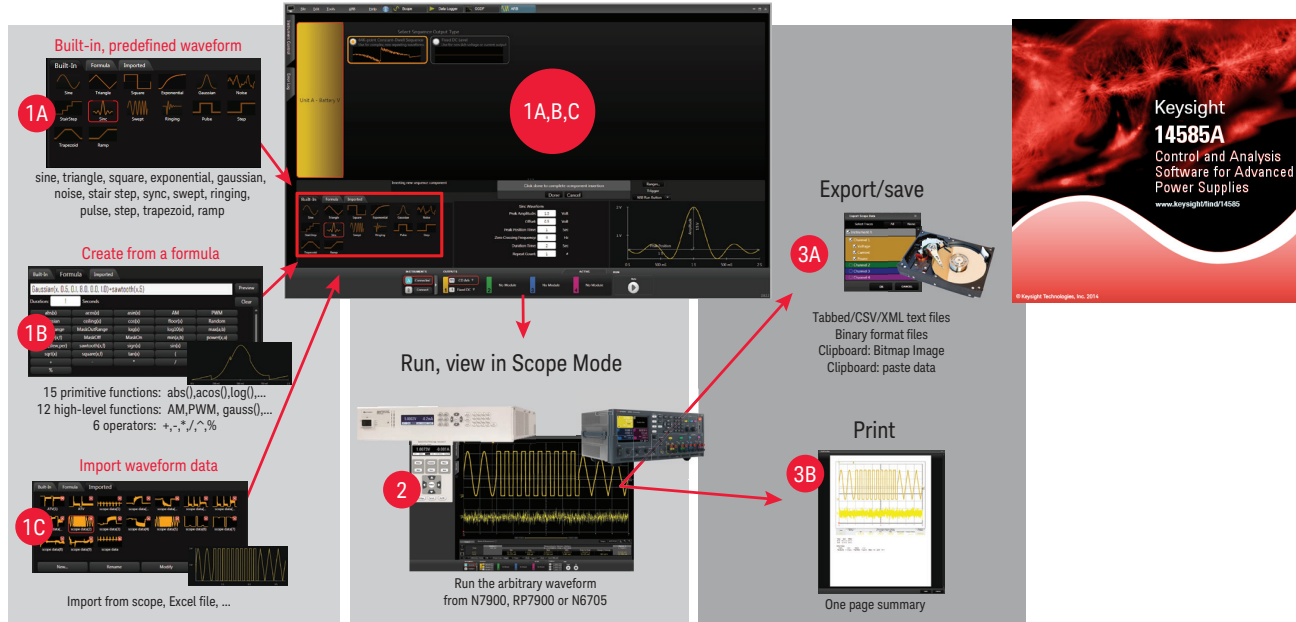


This CCDF measurement reveals the key attributes of standby current in a smartphone.

Arbitrary waveforms

Easily create complex waveforms to stimulate or load a DUT by inputting a formula, choosing from built-in or importing waveform data.

Waveform generation using the 14585A

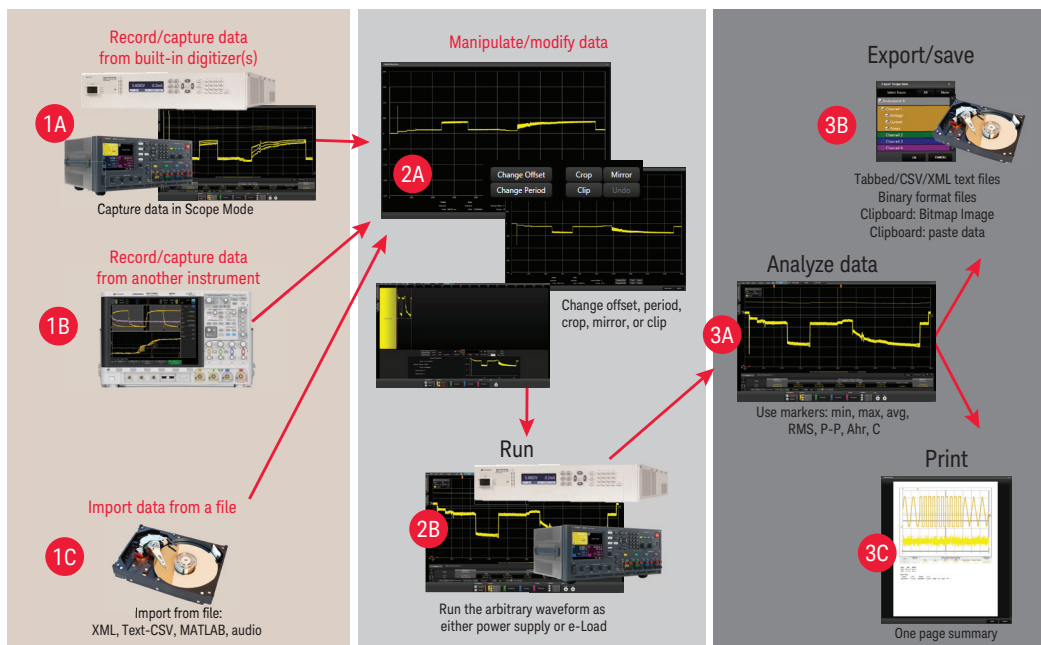


Easily create arbitrary waveforms with only a few clicks.

Record and playback – Combining the power of measurement and source/sink capabilities

Use the scope or data logger modes to capture a waveform and easily transfer the data to the ARB function of the software. Once transferred, the data can be used to reproduce the waveform via the power supply's source or sink (electronic load) capabilities.

Capturing and “playing back” data



Record a waveform, then “play” it back.

Free Trial and Licensing

The 14585A software is available to download and use free of charge. A license is required when connecting the 14585A software to an N6705C DC power analyzer mainframe, a RP7900 Series model, or an APS N7900 Series model. The license resides inside the instrument, not on the PC, and is specific to the instrument's model and serial number. Any copy of the 14585A software can connect to any N6705C mainframe, and/or RP7900, and/or N7900 APS as long as the instrument has a license installed in it. Connect to your instrument for free with the built-in 30-day trial license.

How to order a license for the N6705

Situation	How to get a license
I do not own a DC power analyzer mainframe yet...	When ordering your new N6705C mainframe, add Option 056 to the order. A license will be delivered with your new N6705C mainframe.
I already own an N6705C mainframe...	You can add a license to your currently owned N6705C by ordering the N6705U-056. A license key will be provided to you to activate the license on your mainframe.

How to order a license for the N7900 or RP7900

In all cases, order product number 14585A as a separate line item.

Supported models:

N6705A, N6705B, N6705C DC power analyzer mainframe
All N6700 Series DC power modules

Advanced Power System N7900 Series dynamic DC power supplies
N7950A - N7977A with or without N7909A power dissipater unit(s)

RP7900 Series Regenerative Power System
RP7931A - RP7963A

Download software at:

www.keysight.com/find/14585A

Learn more at: www.keysight.com

For more information on Keysight Technologies' products, applications or services, please contact your local Keysight office. The complete list is available at:
www.keysight.com/find/contactus

