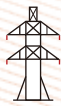


IT7900P High Performance Regenerative Grid Simulator



E-mobility



Grid



Energy Storage



Photovoltaic



IEC Testing



Your Power Testing Solution

IT7900P High Performance Regenerative Grid Simulator



The IT7900P series high-performance Regenerative grid simulator provides an all-in-one test solution that can be used not only as a grid simulator and four-quadrant power amplifier, but also as a four-quadrant regenerative AC/DC electronic load. The full four-quadrant operation, regenerative ability can feedback power to the grid, meet the needs of environmental protection, but also save a lot of electricity and heat dissipation costs. Compact, modular and efficient structure design allows the IT7900P up to 15kVA in 3U single unit, and its power can be extended to 960kVA after master-slave parallel connection. Colorful touch screen with intuitive GUI allows IT7900P to directly define different waveforms. The rich operation modes can meet the test requirement of single-phase, three-phase, inverse-phase and multi-channel. It provides high flexibility for testing and can be widely used in many fields such as PV, ESS and EV.



ESS

PCS energy storage converters, microgrids, home PV energy storage devices



PV

Photovoltaic inverters, power conditioning systems



EV

V2G, V2X, EVSE, vehicle type converters, electric vehicle power supply



Power Electronics

Uninterruptible Power Supply System (UPS), AC power supply, inverter Generators, transformers, AC fans



Electronic Components

Circuit breakers, fuses, connectors



Scientific research, universities, laboratories, certification bodies

AC-DC power adapter testing, electromagnetic compatibility testing

Model	Voltage	Current	Power	Phase	Size
IT7902P-350-10U ATE	350V	10A	2kVA	1Φ	1U
IT7902P-350-10U	350V	10A	2kVA	1Φ	2U
IT7904P-350-20U-ATE	350V	20A	4kVA	1Φ	1U
IT7904P-350-20U	350V	20A	4kVA	1Φ	2U
IT7905P-350-30U	350V	30A	5kVA	1Φ	3U
IT7906P-350-30 ATE	350V	30A	6kVA	1Φ or 3Φ	1U
IT7906P-350-30	350V	30A	6kVA	1Φ or 3Φ	2U
IT7906P-350-90	350V	90A	6kVA	1Φ or 3Φ	3U
IT7909P-350-90	350V	90A	9kVA	1Φ or 3Φ	3U
IT7912P-350-90	350V	90A	12kVA	1Φ or 3Φ	3U
IT7915P-350-90	350V	90A	15kVA	1Φ or 3Φ	3U
IT7930P-350-180	350V	180A	30kVA	1Φ or 3Φ	6U

Model	Voltage	Current	Power	Phase	Size
IT7945P-350-270	350V	270A	45kVA	1Φ or 3Φ	15U
IT7960P-350-360	350V	360A	60kVA	1Φ or 3Φ	27U
IT7975P-350-450	350V	450A	75kVA	1Φ or 3Φ	27U
IT7990P-350-540	350V	540A	90kVA	1Φ or 3Φ	27U
IT79105P-350-630	350V	630A	105kVA	1Φ or 3Φ	27U
IT79120P-350-720	350V	720A	120kVA	1Φ or 3Φ	37U
IT79135P-350-810	350V	810A	135kVA	1Φ or 3Φ	37U
IT79150P-350-900	350V	900A	150kVA	1Φ or 3Φ	37U
IT79165P-350-990	350V	990A	165kVA	1Φ or 3Φ	37U

*1 ATE models are not equipped with touch screen and operating keyboard

*Inverting and phase-locking function can achieve higher voltage test

*1U/2U models are coming soon.

*Please contact ITECH for higher power needs.

*The above specifications are subject to update without notice.

Parameter Features

- High power density, up to 6 kVA for 2U and 15 kVA for 3U
- Voltage can reach 350V L-N
- Master and slave equal flow, parallel machines up to 960kVA*1
- Highly efficient energy return
- Comprehensive working modes selectable: single-phase, three-phase, reversed phase and multi-channel, Voltage extension to 200% of rated voltage in inverted mode
- Support LIST/SWEEP/Surge&Sag three waveform modes
- Harmonic simulation and analysis function up to 50 times *2
- Built-in rich waveform database
- Can simulate arbitrary waveform output, support CSV file import waveform
- Phase angle 0~359° settable
- Touch screen design, simple UI interface
- Built-in USB/CAN/LXI compliant LAN /Digital IO interface, optional GPIB/analog & RS232 interface
- A variety of protection functions, including automatic clearing protection, transient overvoltage protection POVP
- Software watchdogs, etc.

Source Features

- Regenerative grid simulator & full 4-Quadrant AC&DC power sources
- Output frequency: 16-1400Hz
- Power Amplifier function for PHIL applications
- Professional islanding test mode, support R, L, C and active, reactive power settings
- Four output modes of AC/DC/AC+DC/DC+AC can be realized
- Multi-channel function, single unit can test 1-3 DUTs at the same time *3
- Programmable output impedance, simulation of real-world impedance
- Harmonic/inter harmonic synthesis
- Frequency lock and phase lock function to achieve 6 phase& 12 phase power output
- Compliance tests incl. LVRT /Phase Jump/Frequency variation/harmonic injection
- Supported regulatory testing include IEC61000-4-11/4-13/4-14/4-28 etc.
- Provide rich trigger configuration, synchronous capture of the voltage waveform of the object to be measured, to achieve data acquisition and simulation functions

Load Features

- Regenerative full 4-Quadrant AC&DC load
- Output frequency: 16-500Hz
- AC mode supports CC/CP/CR/CS/CC+CR/CE multiple operating modes, and CE mode can simulate a variety of circuit topologies such as single-phase rectifier RLC and shunt RLC.
- DC mode supports 9 working modes such as CC/CR/CP/CV
- AC mode supports both rectified and non-rectified modes
- Adjustable crest factor: 1.414 ~ 5.0
- Support phase shift function in the range of -180°~180.0° *4
- When the three-phase AC, support Y and Δ two kinds of access, Y type connection when the support C-phase phase loss function
- Support with load-on
- Support positive or negative half-cycle pull load
- The unit power factor1 function allows the current waveform to vary with the voltage waveform and the power factor is as close to 1 as possible

*1 3U model only

*2 Voltage/current harmonic analysis, voltage harmonic simulation in source mode, current harmonic simulation in load mode

*3 Multi-channel function is not available for single-phase models

*4 When rectification function is turned on, the setting range of phase shift is bounded by the peak factor



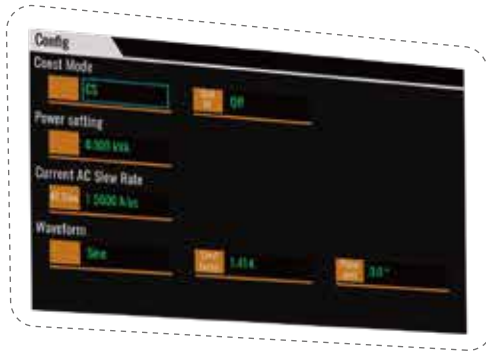
Your Power Testing Solution

IT7900P High Performance Regenerative Grid Simulator

01

All in one unit

IT7900P series integrates 3 products, a grid simulator(IT7900), an AC/DC power supply (IT7800) and a regenerative AC/DC load (IT8200).



02

High power regeneration efficiency

Whether it is used as a grid simulator or a load, in AC or DC mode, the IT7900P is high efficiently power regenerative. The energy generated by the DUT can be fed back to the local grid instead of dissipating in the form of heat, which is good for energy-saving and environment protection.



03

High power density

The IT7900P series can be both 1U/2U/3U stand-alone unit and 15U/27U/37U cabinets. It can meet the test requirements of 2k~165kVA. Among them, the size of the 3U/15kVA model is only 1/12 of the ordinary AC power supply on the market, which can be placed on your test bench, largely saves your room.



Your Power Testing Solution

IT7900P High Performance Regenerative Grid Simulator

04

Various test items

Sliding the touch screen of the IT7900P series is as simple as operating a mobile phone. The intuitive GUI not only allows multiple parameters displayed at the same time, but also multiple display ways are selectable, such as waveform graph, histogram, vector diagram and list.

05

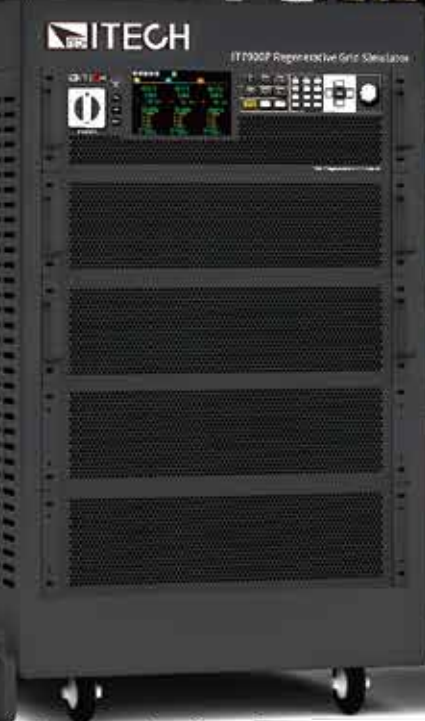
Multiple protection and communication interfaces

IT7900P series has a variety of protection functions to ensure the safety of the test, including: over-current Rms protection, over current peak protection, over temperature protection, automatic clear protection, software watchdog and so on. IT7900P not only has built-in USB/CAN/LAN/digital IO interfaces, but also provides optional GPIB/analog & RS232.

06

Power extension by master-slave parallel connection

Through the master-slave parallel connection, the power of IT7900P can be extended up to 960kVA. It can be easily paralleled without disassembling and assembling the cabinet, and the multi-modules can synchronously share the current output. Not only will it retain all functions after paralleling, but there will be no precision sacrifice.



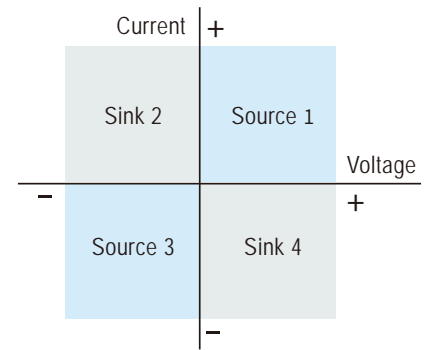
Your Power Testing Solution

IT7900P High Performance Regenerative Grid Simulator

Outstanding Features

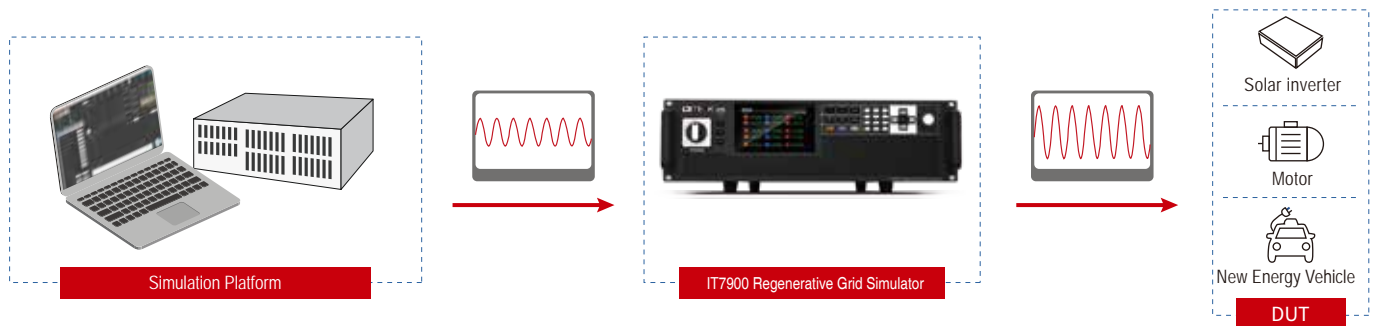
4-Quadrant output

IT7900P series is not only a full four-quadrant power grid simulator, but also a full four-quadrant AC/DC electronic load. It can operate in all four quadrants. The efficient energy regeneration function makes it good for testing the frequency change of grid-connected PV inverters, voltage transients and anti-islanding protection.



Full 4-Quadrant Power Amplifier

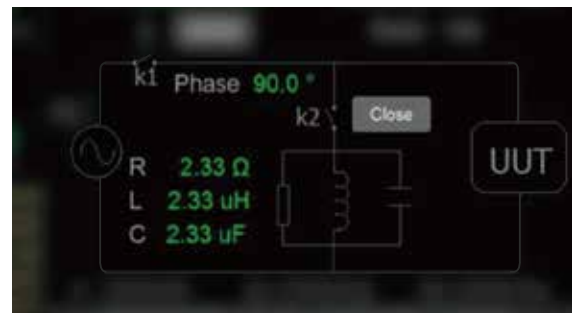
The IT7900P series regenerative grid simulator can be used as a power amplifier to complete power hardware in the loop (PHIL) applications for microgrids, energy storage and new energy vehicles. The digital I/O or a standard suite of analog signal can be input via an external analog interface (optional) and then amplified without distortion to a real power waveshape with an external analog response time of less than 200us.



Professional Anti-islanding Test Mode

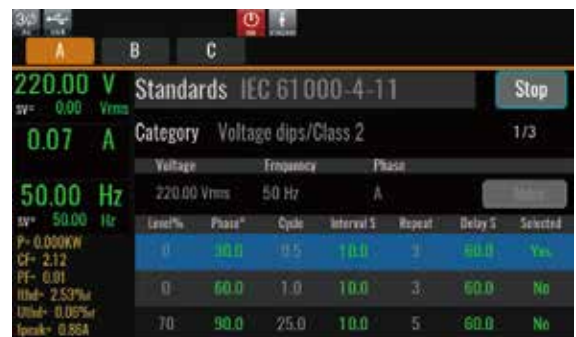
To meet the certification test of anti-islanding effect for grid-tied products, the IT7900P series provide a professional anti-islanding test mode. Users can adjust RLC parameters or configure the parameters of active power and reactive power to achieve the effect of simulating purely resistive or nonlinear grid loads, and further verify the anti-islanding protection response time of grid-tied DUTs under different equivalent impedances, three-phase load balancing and non-balancing conditions.

The solution helps engineers to simplify the test circuit and cost savings of additional equipment such as RLC load and power meter.



Pre-compliance regulation test

According to industry standards, IT7900P series has built-in regulation standards such as IEC 61000-4-11/4-13/4-14/4-28, IEC61000-3-2/3-12. These regulations can be recalled directly. You can also customize the test items required by regulations too.



Your Power Testing Solution

IT7900P High Performance Regenerative Grid Simulator

IT7900P High Performance Regenerative Grid Simulator

AC/DC load conditions emulation

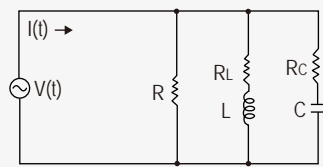
DC load mode

- Constant Voltage (CV)
- Constant Current (CC)
- Constant Resistance (CR)
- Constant Power (CP)
- CC+CV
- CR+CV
- CP+CV
- CC+CR
- CP+CV+CR+CC

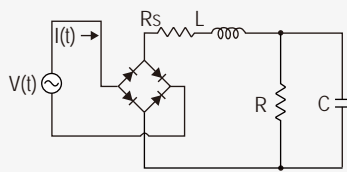
AC load mode

- Constant Current (CC)
- Constant Resistance (CR)
- Constant Power (CP)
- Constant apparent power (CS)
- CC+CR
- CE RLC

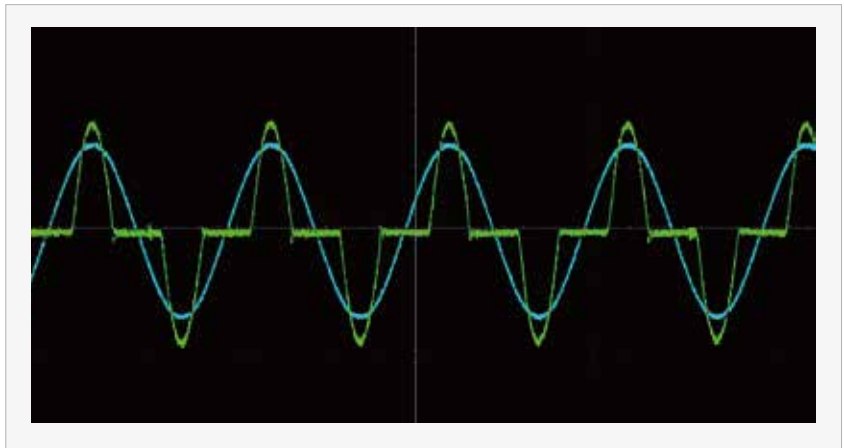
Single rectified RLC
Parallel RLC
.....



Parallel rlc



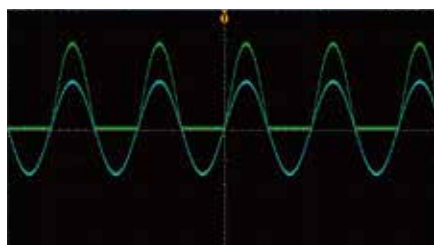
Rectifier single phase rlc



IT7900P AC electronic load can enable the 'Rectified' function in AC mode, so that the load works in the first and third quadrants to ensure that the voltage and current flow always in the same direction. At this time, full wave, positive half wave, or negative half wave can be freely selected.



full wave



positive half wave



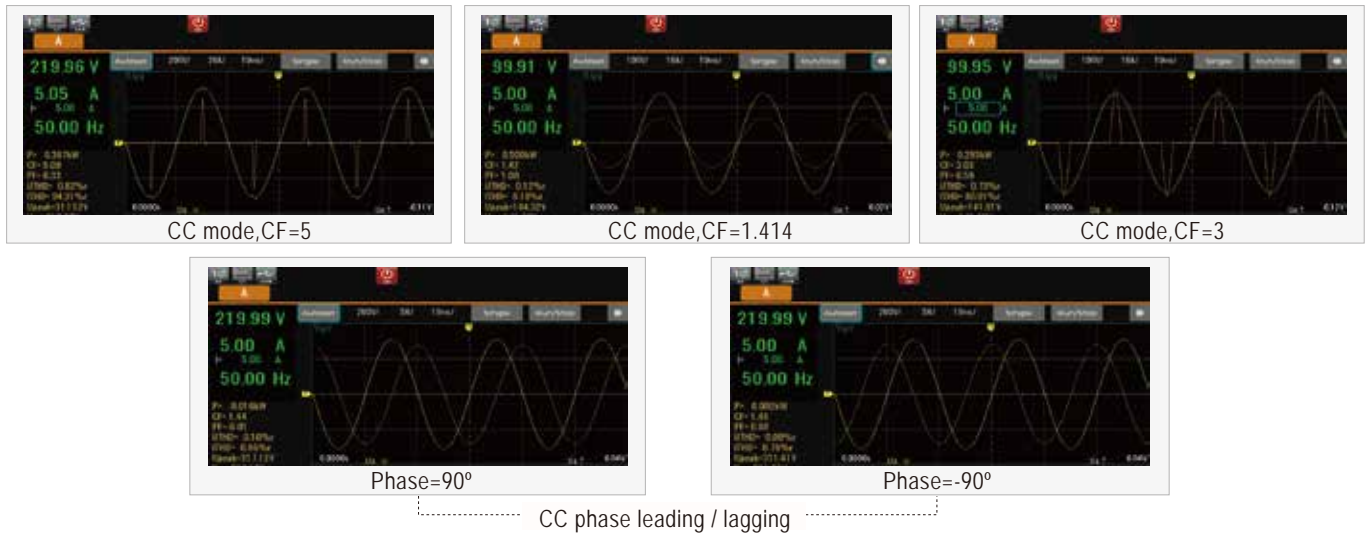
negative half wave

Your Power Testing Solution

IT7900P High Performance Regenerative Grid Simulator

CF 1.414-5.0

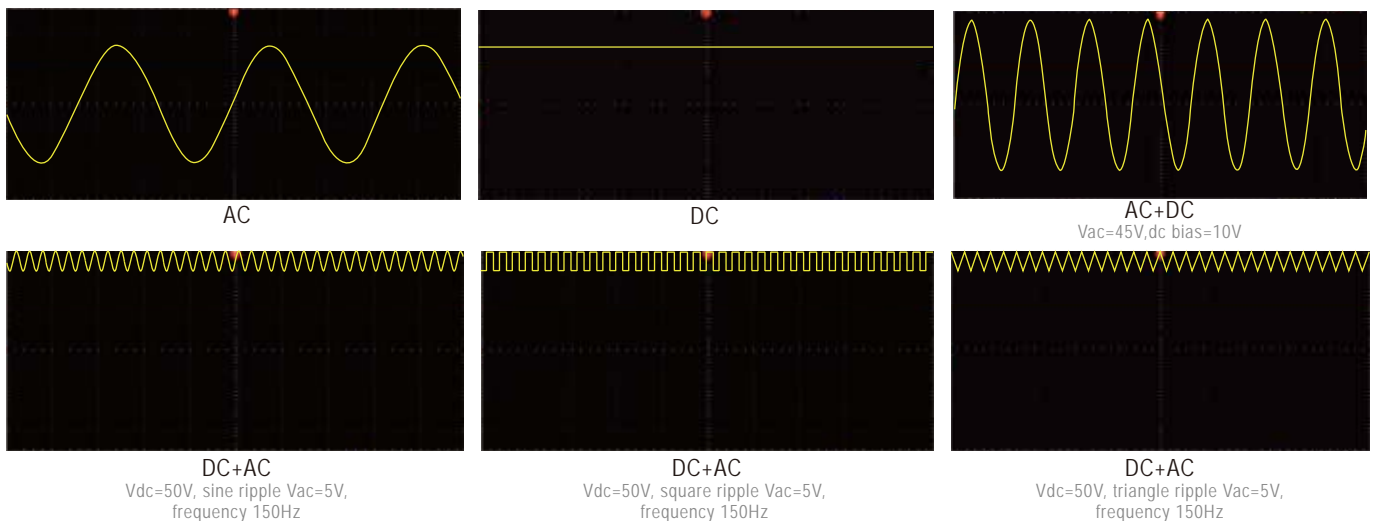
The crest factor indicates the extreme peaks of the waveform. For applications that require a pure sine wave, it is desirable to have a CF value of the load current waveform of 1.414 or as close as possible. However, in practical applications, the peak shape of the current waveform of the load may become very sharp and its CF is often higher than 1.414. At this time, the starting point of the sine wave starts to shift from 0 degrees to the positive degree. So you need to correct the waveform. The Crest Factor of the IT8200 can be adjusted from 1.414 to 5.0, and it also allows to set the phase shift angle from -90° to 90° , correct the resulting amplitude, and keep the RMS unchanged. This enables more accurate simulation of field test conditions to ensure the reliability of the unit under test (UUT).



Multiple operation modes

AC, DC, AC+DC, DC+AC working mode

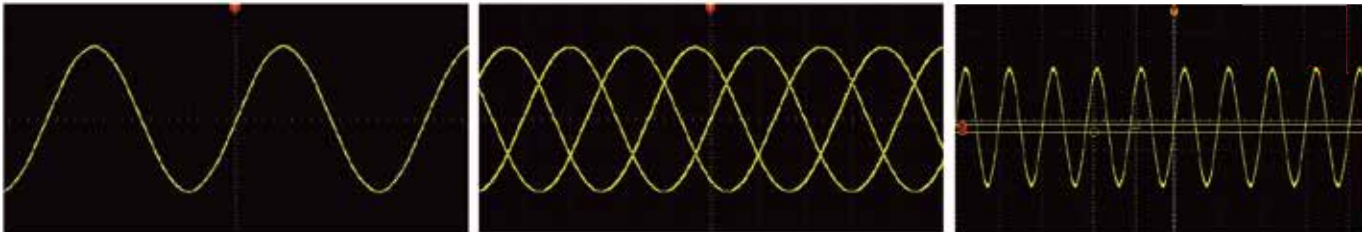
IT7900P series can be used as a "full four-quadrant AC/DC power supply" and provides four output modes: AC, DC, AC+DC, and DC+AC. Not only provide pure AC/DC output, use AC+DC and DC+AC output modes to realize "AC output superimposed DC bias" and simulate "DC output waveform with ripple" to meet the complex application requirements of engineers. In DC mode, the rated power in 100% AC mode can be achieved.



Single-phase, three-phase, reverse phase, multi-channel operation modes

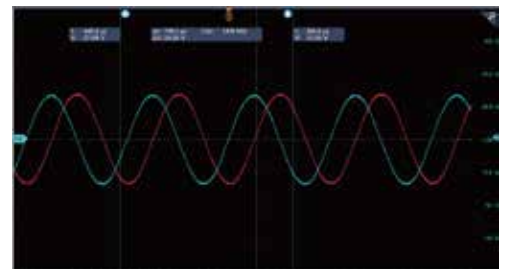
IT7900P series has very flexible operation mode that single-phase, three-phase/ reverse phase /multi-channel output mode can be selected. Combined with the powerful programming function, it can simulate three-phase unbalance , phase loss and phase sequence reverse connection and so on. In the reverse phase mode, users can obtain a single-phase output voltage of up to 700V, and the power remains at 2/3 of the original. Multi-channel mode allows users to test 1-3 independent DUT at the same time. One device for multiple purposes, better equipment utilization, and reduces test costs for enterprises.

IT7900P Operation Mode		
CH1 (1-Phase)	CH2 (1-Phase)	CH3 (1-Phase)
1-Phase		
Reverse Phase		
3-Phase		



Frequency lock/phase lock function, multi-phase output or high voltage output

IT7900P series can realize frequency locking and phase locking between power supplies through optical fiber, simulating 6-phase and 12-phase power output. It can not only keep the set value updated synchronously, but also has multi-phase protection to meet the complex AC test requirements. This also helps to realize high-voltage tests up to 700Vrms 3 phase. Via the digital IO interface, it can also be used for simple multi-phase system applications.

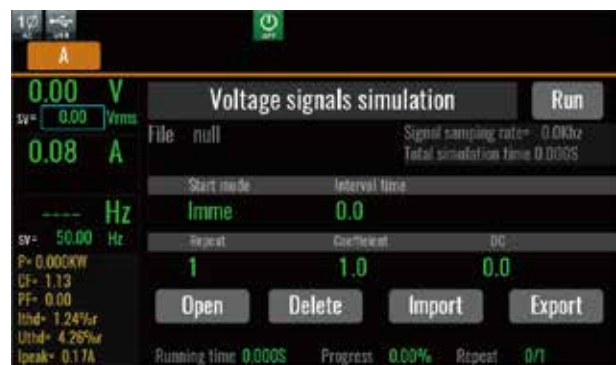


phase lock , 2400Hz

Measurement Functions

Data acquisition and simulation

IT7900P series integrates an advanced data acquisition system based on digital signal processor, and provides measurement and waveform analysis functions of a digital oscilloscope, a power meter and a digital multimeter. Its current measurement accuracy is as high as 0.1%+0.2%FS, and the voltage measurement accuracy is as high as 0.1%+0.1%FS. 6 oscilloscope curves can be displayed at the same time, which not only saves the cost, but also saves the time for wiring connection. The trigger configuration of IT7900P can synchronously capture the voltage waveform of the DUT, and realize the functions of data acquisition and simulation. The user can import the collected abnormal voltage data of the power grid into the IT7900P to reproduce the power grid status, set the repetition times, offset and other parameters of the waveform.



Your Power Testing Solution

IT7900P High Performance Regenerative Grid Simulator

Data record

Thanks to the function of large data recording, IT7900P series is capable of recording up to 7 hours of continuous data at short intervals (fastest: 100ms). And it's easy to view the complete curve generating from the start to the end of the test. There are six curves that can be displayed at the same time at most. In addition, you can slide the vernier calipers on the screen to check the exact data at a particular point in the current trend curves. It is useful for analyzing errors during test for a long time or inflection points during loading, etc. Besides, you can export the test data for further analysis by front panel USB interface.



Harmonic analysis

Harmonic analysis functions include both voltage and current harmonic measurement. In the harmonic mode, the voltage and current total harmonic distortion (THD) and the phase difference test of the harmonic to the fundamental wave can be realized. In addition, you can make multiple harmonic measurements. The test results are displayed in a list, histogram or vector diagram, easy to check.



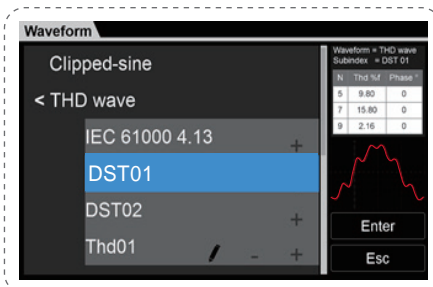
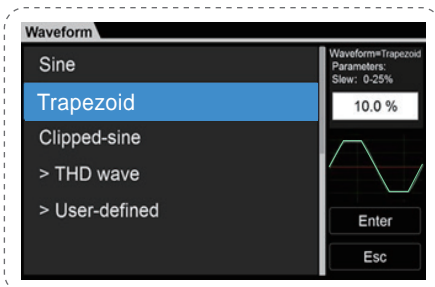
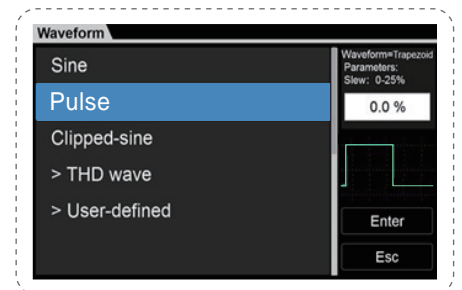
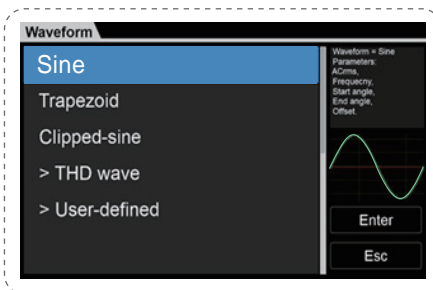
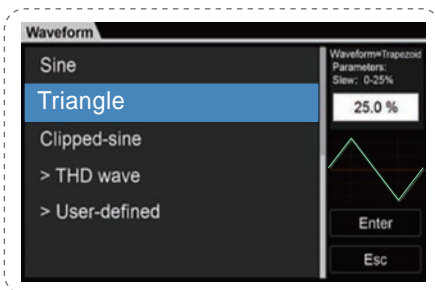
N	Voltage	Angle	Thd %	Voltage	Angle	Thd %	Phase	Phase
1	230.0	0.0	100	230.0	120.0	100	0.0	0.0
2	0.5	0.0	0.2	0.5	0.0	0.2	0.0	0.0
3	20.5	0.0	8.9	19.0	120.0	8.1	0.0	0.0
4	0.5	0.0	0.2	0.5	0.0	0.2	0.0	0.0
5	0.5	0.0	0.2	0.5	0.0	0.2	0.0	0.0
6	0.5	0.0	0.2	0.5	0.0	0.2	0.0	0.0
7	0.5	0.0	0.2	0.5	0.0	0.2	0.0	0.0
8	0.5	0.0	0.2	0.5	0.0	0.2	0.0	0.0
9	0.5	0.0	0.2	0.5	0.0	0.2	0.0	0.0
10	0.5	0.0	0.2	0.5	0.0	0.2	0.0	0.0



Powerful waveform editing function

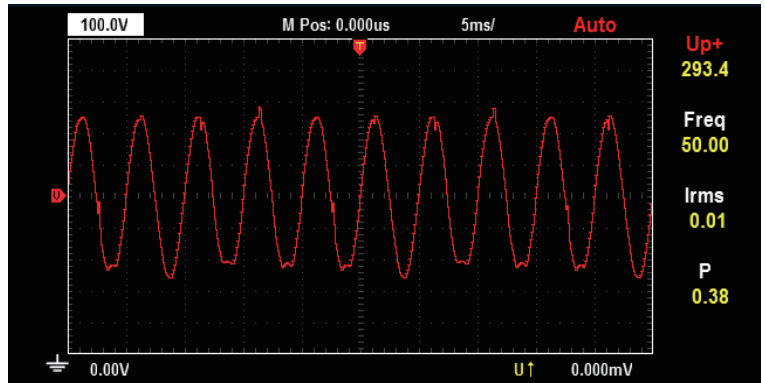
Built-in various type of distorted waveforms

In addition to sine waveform, IT7900P series provides various standard AC waveforms, such as triangular wave, sawtooth wave, square wave, trapezoidal wave and clipped sine wave. These waves can be easily recall from the menu and displayed in the LCD touch screen. Moreover, in combination with sequence programming function, users can realize multiple waveform continuous output, to cope with complex power line disturbance test.



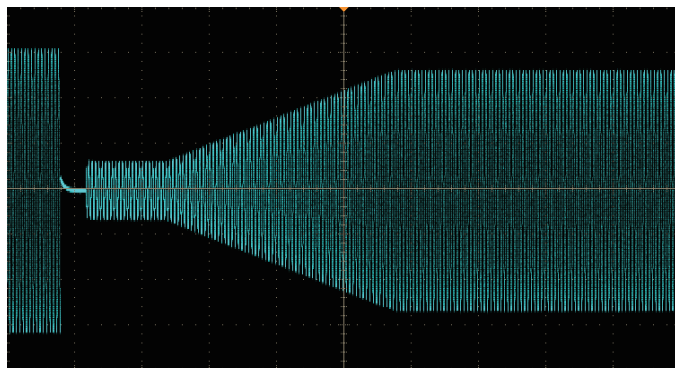
User-defined waveform function

IT7900P series provides user-defined waveform editing function that allows users to simulate the effects of real AC or DC power supply systems on DUT's in different test environments by importing real waveform data into the device, it supports up to 1024 points of data import.

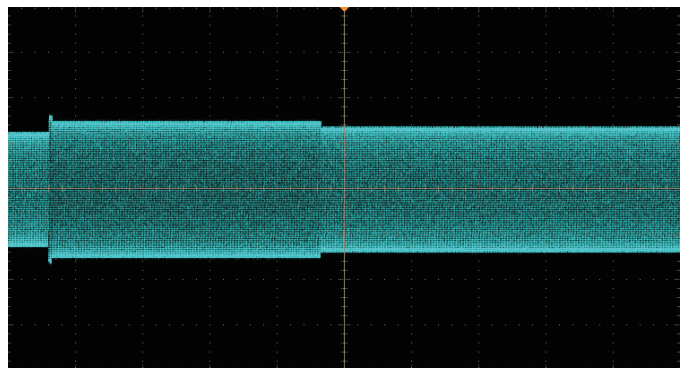


Simulate power grid and low voltage ride through (LVRT) testing

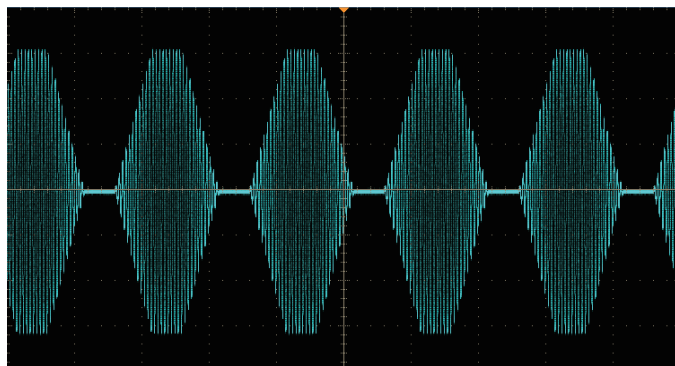
Low voltage ride-through refers to the ability of the power generation system to continue to operate without disconnecting from the grid within a certain range of voltage drop when the grid fault or disturbance causes a voltage drop, and even provides a reactive power to help the system recover the voltage. You can edit the test parameters under LVRT condition. With the fast response, it can fully meet the test requirements of LVRT. At the same time, the IT7900P series has the function of arbitrary waveform. With the LIST function, it can edit and simulate various grid disturbance waveforms through the panel or software, such as instantaneous power failure, surge and voltage rise and fall.



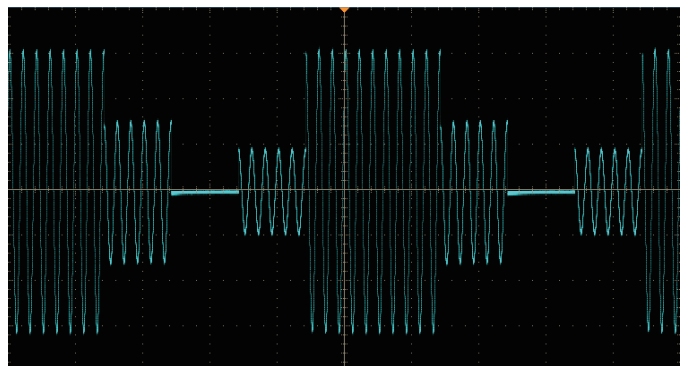
LVRT



HVRT



slow rise and fall



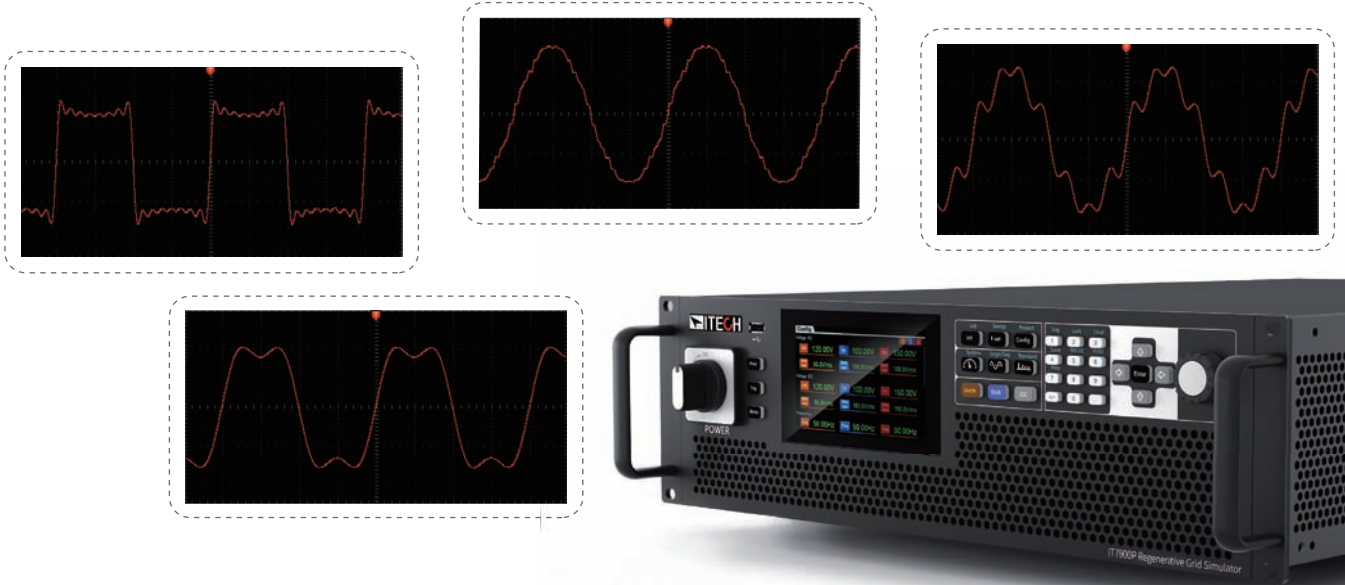
instantaneous power failure

Your Power Testing Solution

IT7900P High Performance Regenerative Grid Simulator

Harmonic and inter-harmonic simulation

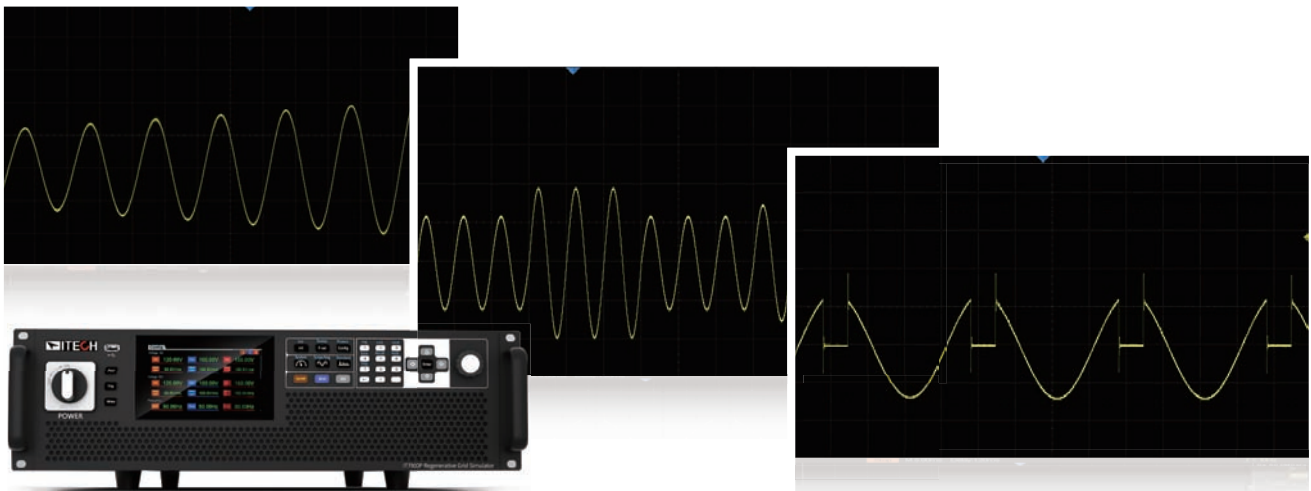
With high-speed DSP technology, IT7900P series is capable of simulating harmonic, inter-harmonic and harmonic synthesis. By setting the amplitude and phase, it can simulate up to 50th harmonics(fundamental frequency is 50Hz or 60Hz), creating a periodic distortion waveform. It also has built-in 30 types harmonic distortion waveforms for quick recall. Harmonic test is one of the important tests for EMC immunity, and single-phase harmonics, three-phase harmonics and three-phase harmonic unbalance output can be realized,also meet IEC regulations test requirements.



LIST/SWEEP/Surge & Sag modes

IT7900P series supports NORMAL,LIST and SWEEP mode. Each mode can work with Surge&Sag function.

- In LIST mode, a single file supports up to 200 steps, and the waveform type, voltage, frequency, slope and start-stop phase angle can be selected under each step. When the output voltage or frequency jumps, a trigger signal can be generated to synchronize external devices, which is especially suitable for large-scale test platforms with strict logic control and fast response for inter-device linkage.
- SWEEP is suitable for AC mode, which can test the efficiency of switching power supply, grab the voltage and frequency of the maximum power point, and change the setting parameters in a step-by-step way.
- In NORMAL/LIST/SWEEP modes, Surge&Sag can work with each of them. The surge and sag can be controlled by trigger or cycle, and the starting angle of the drop can be set, and waveform smoothing, symmetrical and asymmetrical waveform operations are supported. Waveforms can be quickly created to replicate waveform distortions or transient status such as spikes, dropouts, or any other anomalies that can be seen as a single cycle.

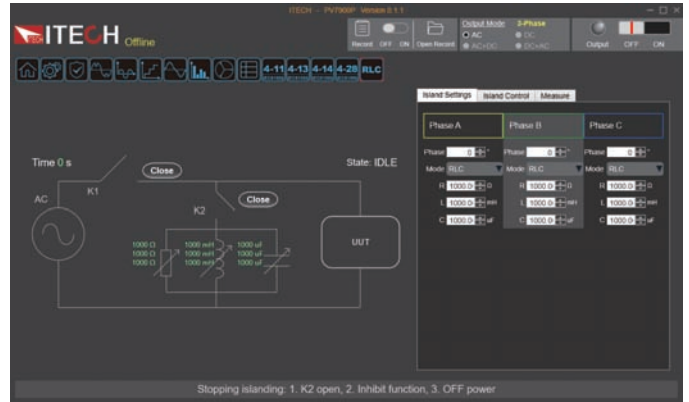
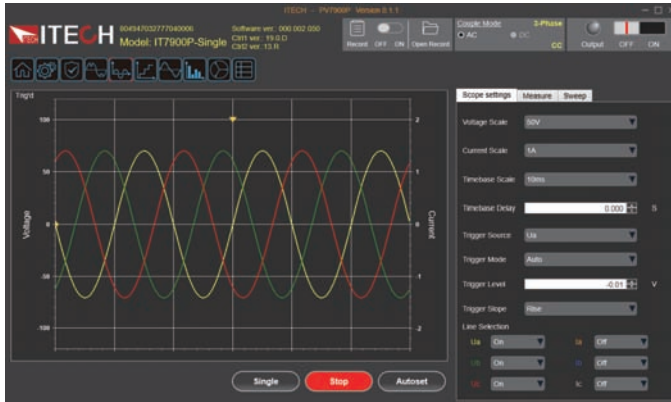


Your Power Testing Solution

IT7900P High Performance Regenerative Grid Simulator

Intuitive software interface

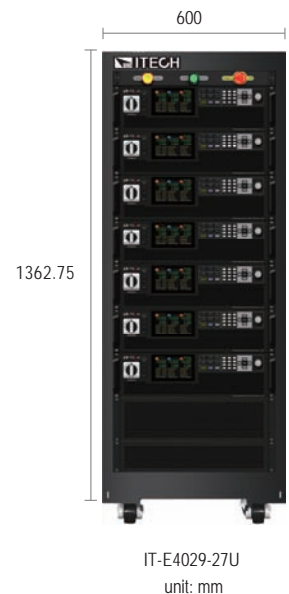
IT7900Pseries provides free PC software PV7900P with an intuitive GUI. Meanwhile, it allows remote control, even the ATE models without display screen can be programmed, communicated and monitored.



Optional Accessories

Item	Model	Specification	Description
Parallel kit	IT-E4029-15U *1	IT15U cabinet	800mm×550mm X907.6mm
	IT-E4029-27U *1	IT27U cabinet	800mm×600mm×1362.75mm
	IT-E4029-37U *1	IT37U cabinet	800mm×600mm×1764.35mm
	IT-E168	fiber kit for parallel	for single unit
	IT-E169	fiber kit for parallel	for cabinet
Other accessories	IT-E258	power cord for 3U unit, 5m, US standard	AC input power cord
	IT-E258-15U	power cord for 15U cabinet, 5m, US standard	AC input power cord
	IT-E258-27U	power cord for 27U cabinet, 5m, US standard	AC input power cord
	IT-E258-37U	power cord for 37U cabinet, 5m, US standard	AC input power cord
	IT-E176	GPIB	
	IT-E177	RS232 & analog	

*1 There is standard cabinet for models >30kVA



IT-E4029-27U
unit: mm

Input parameters (connect to grid)				
AC Input	Wiring connection	3 phase 3wire + ground(PE)		
	Line voltage	RMS	(200V~220V) ±10% *1 (380V~480V) ±10%	
	Line current	RMS	< 33.7A	
	Apparent power		< 17.4kVA	
	Frequency		45~65Hz	
Power factor	typ	0.98		
Output parameters (connect to EUT) (connect to grid)				
AC Output	Output voltage	VLN*2	0~350V	
		VLL	0~606V (3phase) / 0~700V (reverse)	
	Output current	RMS	90A (1phase) / 30A (3phase/multichannel/reverse)	
		Crest Factor *3	6	
		Peak	270A (1phase) / 90A (3phase/multichannel/reverse)	
	Output power	Per Phase	5kVA	
		Max. Power	10kVA (reverse phase) / 15kVA (1phase/3phase/multichannel)	
	Voltage setting			
	Range	0~350V (1phase/3phase/multichannel) / 0~700V (reverse)		
	Resolution	0.01V		
	Accuracy	0.1%+0.1% F.S (16Hz~500Hz) / 0.1%+(0.2%*kHz) F.S (500.01Hz~2.4kHz)		
	DC offset voltage	typ	0.02Vdc	
	Current Limit setting			
	Range	RMS	90A (1phase) / 30A (3phase/multichannel/reverse)	
	Resolution	0.01A		
	Accuracy	<0.1% + 0.2% F.S. (16Hz~500Hz) / <0.2% + 0.3% F.S. (150.01Hz~500Hz) / 0.3%+(0.6%*kHz) F.S (500.01Hz~2.4kHz)		
	Frequency			
	Range	16~500Hz (Low *4) / 16~2.4k (High *4)		
	Resolution	0.01Hz		
	Accuracy	0.01% (16Hz~500Hz) / 0.1% (500.01Hz~2.4kHz)		
	waveform synthesis	50/60Hz	up to 50 orders	
	Phase			
	Range	0~360°		
Resolution	0.1°			
Voltage setting				
Range	-495~495Vdc (1phase/multichannel) / -990~990Vdc (reverse)			
Resolution	0.01V			
Accuracy	<0.1%+0.1% F.S			
Current setting				
Range	-30~30Adc (multichannel/reverse) / -90~90Adc (1phase)			
Resolution	0.01A			
Accuracy	<0.1% + 0.2% F.S.			
Max. power				
Phase power	Per Channel	5kW		
Max. power (reversephase)	Max. Power (reverse phase)	10kW		
Total power	Max. Power (1phase/multichannel)	15kW		
Voltage stability	Line regulation	<0.05% F.S.		
	Load regulation*5	<0.05% + 0.05% F.S.(DC,16Hz~500Hz) / <0.05% + (0.1%*kHz) F.S(500.01Hz~2.4kHz)		
	THD	<0.5%(16Hz~100Hz) / <1%(100.01Hz~500Hz) / <1%+(1%*kHz) (500.01Hz~2.4kHz)		
	Voltage ripple	RMS	<0.4V	
Dynamic response*6	typ	200us		
Programmable impedance	R Range	0~1Ω (3phase/multichannel) / 0~0.333Ω (1phase) / 0~2Ω(reverse)		
	L Range	0~1000uH (3phase/multichannel) / 0~333.333uH (1phase) / 0~2000uH (reverse)		
RLC	P Range	0~5kW (3phase/multichannel) / 0~15kW (1phase) / 0~10kW (reverse)		
	QL Range	0~5kVar (3phase/multichannel) / 0~15kVar (1phase) / 0~10kVar (reverse)		
	QC Range	0~5kVar (3phase/multichannel) / 0~15kVar (1phase) / 0~10kVar (reverse)		
	R Range	1~1000Ω (3phase/multichannel) / 0.333~333.333Ω (1phase) / 2~2000Ω (reverse)		
	L Range	1~5000mH (3phase/multichannel) / 0.333~1666.667mH (1phase) / 2~10000mH (reverse)		
	C Range	0.001~5mF (3phase/multichannel) / 0.003~15mF (1phase) / 0.001~2.5mF (reverse)		
Voltage Slew Rate, Typical	≥2 V/μs with full-scale programmed voltage step			
Output Isolation	550Vac			
Output parameters (electronic load mode)				
AC Mode	Input voltage	VLN	30~350V	
		VLL	51.96~606V (3phase) / 60~700V (reverse)	
	Input frequency	DC,	16~500Hz	
		RMS	90A (1phase) / 30A (3phase/multichannel/reverse)	
	Input current	Crest Factor *7	5	
		Peak	270A (1phase) / 90A (3phase/multichannel/reverse)	
		Per Phase	5kVA (3phase)	
	Input power	Max. Power	10kVA (reverse phase) / 15kVA (1phase/3phase/multichannel)	
		CC Mode		
	Current Range	RMS	90A (1phase) / 30A (3phase/reverse)	
Resolution	0.01A			
Accuracy*8	<0.1% + 0.2% F.S. (DC,16Hz~150Hz) / <0.2% + 0.3% F.S.(150.1Hz~500Hz *9)			
CP Mode				
Range	Max. Power	15kW (1phase/3phase) / 10kW (reverse phase)		
	Per Phase	5kW (3phase)		
Resolution	0.001kW			
Accuracy	<0.4% + 0.4% F.S. (DC,16Hz~500Hz)			

AC Mode	CS Mode			
	Range	Max. Power	15kVA (1phase/3phase) / 10kVA (reverse phase)	
		Per Phase	5kVA (3phase)	
	Resolution	0.001kVA		
	Accuracy	<0.4% +0.4% F.S. (DC, 16Hz~500Hz)		
	CR Mode			
	Range	RMS	0.34~389Ω (1phase) / 1~1167Ω (3phase)	
		reverse phase	2~2334Ω	
	Resolution	0.001Ω		
	Accuracy *10	0.4%+0.4%F.S.		
	Circuit Emulation(CE)-Parallel rlc			
	R Range	0.33 ~ 1000Ω (1phase) / 1 ~ 3000Ω (reverse phase) / 1 ~ 3000Ω (3phase)		
	L Range	1 ~ 2000uH (1phase) / 3 ~ 2000uH (reverse phase) / 3 ~ 2000uH (3phase)		
	C Range	0.001 ~ 9900uF (1phase) / 0.001 ~ 3300uF (reverse phase) / 0.001 ~ 3300uF (3phase)		
	Rc Range	0.33 ~ 1000Ω (1phase) / 1 ~ 3000Ω (reverse phase) / 1 ~ 3000Ω (3phase)		
	RL Range	0.33 ~ 1000Ω (1phase) / 1 ~ 3000Ω (reverse phase) / 1 ~ 3000Ω (3phase)		
	IL Range	0 ~ 272.7A (1phase) / 0 ~ 90.90A (reverse phase) / 0 ~ 90.90A (3phase)		
	Max peak current	272.7A (1phase) / 90.9A (reverse phase) / 90.9A (3phase)		
	Circuit Emulation(CE)-Rectifier single phase rlc			
	R Range	0.33 ~ 1000Ω (1phase) / 1 ~ 3000Ω (reverse phase) / 1 ~ 3000Ω (3phase)		
	L Range	0.1 ~ 2000uH (1phase) / 0.3 ~ 2000uH (reverse phase) / 0.3 ~ 2000uH (3phase)		
	C Range	0.001 ~ 9900uF (1phase) / 0.001 ~ 3300uF (reverse phase) / 0.001 ~ 3300uF (3phase)		
	RS Range	0 ~ 1000Ω (1phase) / 0 ~ 3000Ω (reverse phase) / 0 ~ 3000Ω (3phase)		
	Vcap Range	0 ~ 499.924V (1phase) / 0 ~ 499.924V (reverse phase) / 0 ~ 499.924V (3phase)		
	Vdiode Range	0 ~ 5V (1phase) / 0 ~ 5V (reverse phase) / 0 ~ 5V (3phase)		
	Max peak current	272.7A (1phase) / 90.9A (reverse phase) / 90.9A (3phase)		
	Phase Range			
	Range	Rectified Mode *11	-82.8°~+82.8°	
			-90°~+90° (Current Source Mode: +90.01°~+180° & -90.01°~-180°)	
	Resolution	0.1°		
	Accuracy	1% F.S.		
	CF setting			
	Range	1.414 ~ 5.0		
	Resolution	0.001		
	DC Mode	voltage range	30 ~ 499V	
		current range	0 ~ 90A (1phase)	
		current rise time	200us	
		working mode	CC, CV, CR, CP	
	Measurement parameter (grid simulator mode)			
	Voltage RMS	Resolution	0.01V	
		Accuracy	<0.1%+0.1% F.S. (DC,16Hz~500Hz) / <0.1%+(0.2%*kHz) F.S (500.01Hz~2.4kHz)	
	Current RMS	Resolution	0.01A	
Accuracy		<0.1% + 0.2% F.S. (DC,16Hz~150Hz) / <0.2% + 0.3% F.S. (150.01Hz~500Hz) / <0.3% + (0.6%*kHz) F.S (500.01Hz~2.4kHz)		
Peak current	Resolution	0.1A		
	Accuracy	<0.4% + 0.6% F.S. (DC,16Hz~500Hz) / <0.4% + (1.2%*kHz) F.S (500.01Hz~2.4kHz)		
Output power	Resolution	0.001kW		
	Accuracy	<0.4% +0.4% F.S. (DC,16Hz~500Hz) / <0.4% + <(0.8%*kHz) F.S (500.01Hz~2.4kHz)		
Harmonic measurement	Max.	50/60Hz	up to 50 orders	
Measurement parameter (electronic load mode)				
Voltage RMS	Range	0~350Vrms		
	Resolution	0.01V		
	Accuracy	<0.1%+0.1% F.S. (DC,30Hz~500Hz)		
Current RMS	Range	0~90A		
	Accuracy	<0.1% + 0.2% F.S. (DC,30Hz~150Hz) / <0.2% + 0.3% F.S. (150.1Hz~500Hz)		
Peak current	Range	0~270A		
	Resolution	0.1A		
	Accuracy	<0.3% + 0.6% F.S. (DC,30Hz~500Hz)		
Active power	Range	0~15kW		
	Resolution	0.001kW		
	Accuracy	<0.4% +0.4% F.S.		
Reactive power	Range	0~15kVAR		
	Resolution	0.001kVAR		
	Accuracy	<0.4% +0.4% F.S.		
Apparent power	Range	0~15KVA		
	Resolution	0.001KVA		
	Accuracy	<0.4% +0.4% F.S.		
CF measurement	Range	1~5		
	Resolution	0.01		
PF measurement	Range	0.1~1		
	Resolution	0.01		
	Accuracy	1%F.S.		
Harmonic measurement	Max.	50/60Hz	up to 50 orders	

Regenerative		
Max. Regenerative power		15kVA
THD		< 5%
Others		
Efficiency	typ	88%
dimension		483.00mm (W) * 151.3mm (H) * 700mm(D) (841.6mm cover and holder included)
Weight		42kg
Working temperature		0 C -50 C
Programming response time		2ms
Remote Sense Compensation Voltage		20V
Communication interface		Built-in USB/CAN/LAN/Digital IO interface, optional GPIB / Analog&RS232

*1 (200~220) ±10%, 3 phase AC input, power is 60% of the rated.

*2 Depending on the frequency, the output voltage will decrease. The rated voltage can be output below 1.4kHz, the maximum output voltage at 2kHz is 250.76Vrms, and the maximum output voltage at 2.4kHz is 208.97Vrms.

*3 When the output frequency is below 50Hz/60Hz, and the peak current is not exceeded, the maximum CF is 6; under the condition of full current and full power, the maximum CF is *4. When loopSpeed Low is low it can better complied DUT's characteristics; When LoopSpeed is High, the dynamic response time is faster.

*5 30kW and above models need to use the sense remote measurement mode for testing.

*6 Dynamic response time test, DC mode, high speed, measured under the condition that the capacitance of DUT is less than 10uF

*7 When the input frequency is below 50Hz/60Hz, and the peak current is not exceeded, the maximum CF is 5; under the condition of full current and full power, the maximum CF is 3.

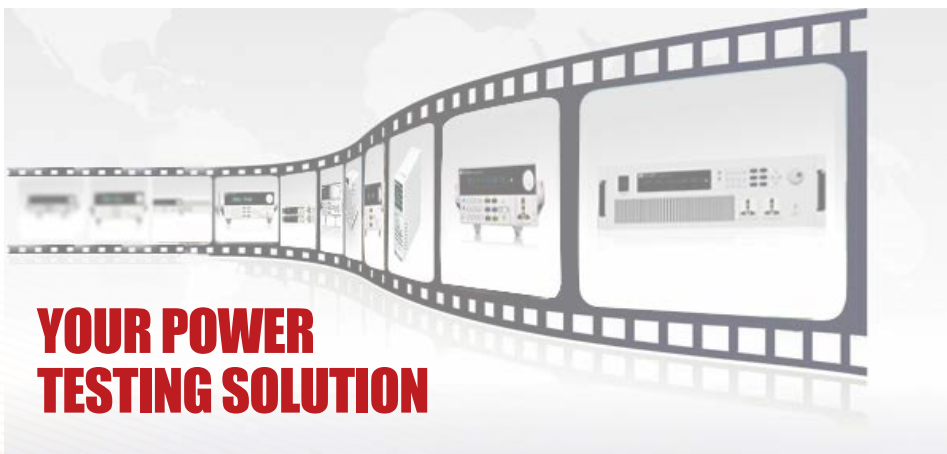
*8 For frequency <150Hz, the minimum current for accuracy test is 1%F.S., for frequency>150Hz, the minimum current for accuracy test is 3%F.S.

*9 When LoopSpeed is Low, it is more adaptable to the load; when LoopSpeed is Fast, the dynamic response is faster; when the frequency is high, please use Fast mode.

*10 Test frequency <150Hz, which meets this specification.

*11 In the rectifier load mode, the setting range of the phase angle is related to CF. The higher the CF, the larger the settable range of the phase angle.

All the above parameters are subject to change without prior notice from ITECH.



This information is subject to change without notice. For more information, please contact ITECH.

Taipei

Add: No.918, Zhongzheng Rd., Zhonghe Dist., New Taipei City
235, Taiwan

Web: www.itechate.com

TEL: +886-3-6684333

E-mail: info@itechate.com

Factory I

Add: No.108, XiShanqiao Nanlu, Nanjing city, 210039, China

TEL: +86-25-52415098

Web: www.itechate.com

Factory II

Add: No.150, Yaonanlu, Meishan Cun, Nanjing city, 210039, China

TEL: +86-25-52415099

Web: www.itechate.com



ITECH Web



ITECH Facebook



ITECH LinkedIn