

# AC6900 Series Power Sources

## A Complete Three-Phase AC Power Solution

Keysight's AC6900 Series AC power sources provide a complete AC and DC power solution by combining the capabilities of a multimeter, harmonic analyzer, and power analyzer in one instrument. You can easily produce DC power, either alone or as a DC offset to an AC waveform, in a compact form factor.



## Easily Achieve Your Test Goals

The increasing demand for testing avionics devices such as air traffic management systems, sensors, and crewless aircraft systems demands a sophisticated AC and DC power solution. Test system designers are constantly looking for ways to optimize their avionic electronic systems.

A compact, high-performance AC power source with DC capability is ideal for achieving this goal. An avionics test software suite will help to accelerate pre-compliance testing that meets commercial and military standards.

Since your product will have to operate in the real world of unpredictable AC power, you need to design and verify its operation under a wide range of AC power inputs. For example, brownouts, dropouts, sags, and other irregularities are not unusual in many industries today.

You need to test using the compliance tests of the country where you plan to sell the product to ensure it meets their regulatory requirements for line voltages and frequencies.

The AC6900 Series AC power sources have the features you need to easily achieve your test goals in either a research and development environment or on the manufacturing test floor.

The five-inch LCD color display shows the main measurements for all phases simultaneously. The intuitive interface minimizes your team's learning curve while making measurements. The multiple IO connectivity – LXI-LAN, USB, and GPIB provides flexible synchronization.



### Output

- Single-phase, single-phase three-wire, or three-phase four-wire
- AC, DC, or AC plus DC mode
- maximum AC voltage at 320 Vrms
- maximum DC voltage at 452 V
- frequency up to 5 kHz

### Built-in tests

- power line disturbance
- sequencing
- harmonic analysis
- built-in waveform generation

### Protection

- over and undervoltage including current protection
- output inhibit

### Programming

- soft start / stop function
- analog and digital control
- LAN eXtensions, USB, and GPIB

## Simplify Test Setups with Accurate Measurement Capabilities

AC6900 Series AC power sources have extensive measurement capabilities that would typically require many complex measurement instruments encompassing multimeter, harmonic analyzer, and power analyzer. This solution is suitable for testing equipment in the avionics industry that operates at nominally 400 Hz, 800 Hz, or up to 5,000 Hz meet RTCA DO-160 and MIL-STD-704 standards. These two standards include both AC and DC immunity tests.

You will experience the following precision measurements:

- AC, DC, AC plus DC voltage, and current
- peak voltage and current
- real, apparent, and reactive power; crest factor and power factor
- harmonic analysis of voltage and current waveforms providing amplitude and phase up to the 50th harmonic
- total harmonic distortion (THD)

Using the measurement capabilities of a Keysight AC6900 Series AC power source simplifies your test setups, reduces test complexity, and helps you output accurate data quickly.

## Extensive Protection to Prevent Load Damage

In addition to overcurrent, overvoltage, overpower, and overtemperature protection, the AC6900 Series AC power source offers output disconnect relays and remote inhibit capability to quickly disable the output of the AC power source via a transistor-transistor logic (TTL) signal to protect the DUT.

## Intuitive and Easy-to-Use Front Panel Interface and Flexible IO Connectivity

The five-inch LCD color display shows the primary measurements of all phases simultaneously. The interface is intuitive, minimizing the learning curve, enhancing the user experience and optimizing operation. The multiple IO connectivity – LXI-LAN, USB and GPIB provides the greatest flexibility.

## Application Information

### Avionics

- test instrumentation and automated test equipment (ATE) test stations
- simulate power interruption on cockpit electronics
- evaluate window heating system
- perform pre-compliance test

### Specialty testing

- measure current harmonic content and creating custom AC power waveforms; combined AC and DC signals
- test current harmonics and voltage fluctuations for pre-compliance requirements
- ensure relays, transformers, power components, and fire alarms are operating correctly
- test power products such as AC / DC adapters, AC / DC power supplies, and uninterruptible power supplies
- check AC motors and electronic controllers

# Measurements At A Glance With Large Color Display

Meter view – default

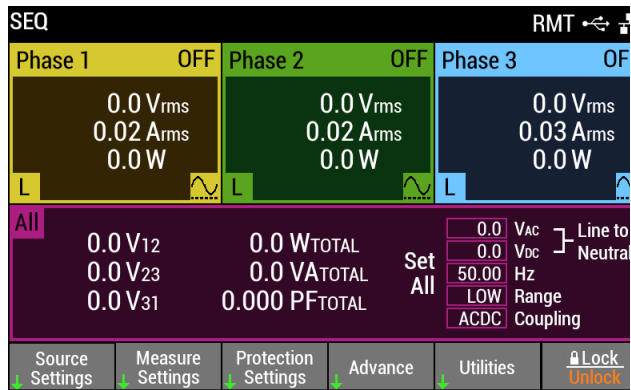


Figure 1. View all three phases at a glance

Meter view – single-phase view

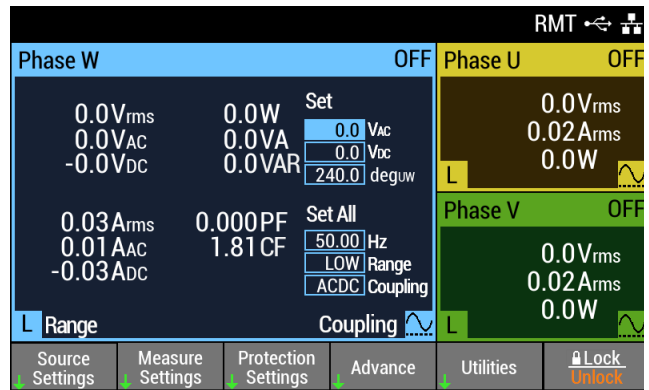


Figure 2. View more information on a selected phase

Built-in powerline disturbance simulation

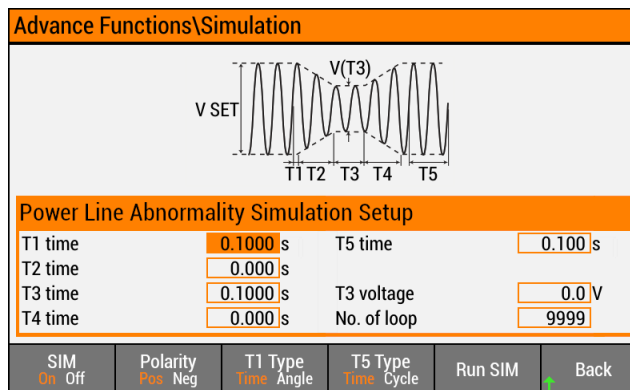


Figure 3. Simulate power outage, surge and sag for environmental testing on your devices

Built-in sequencer

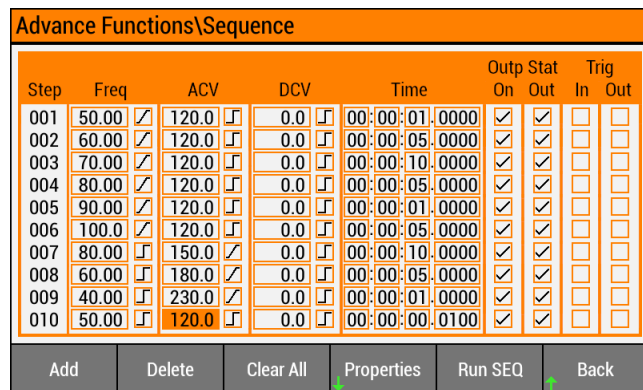


Figure 4. Easily generate output voltage and frequency transients over time for stress tests

Built-in harmonic analysis

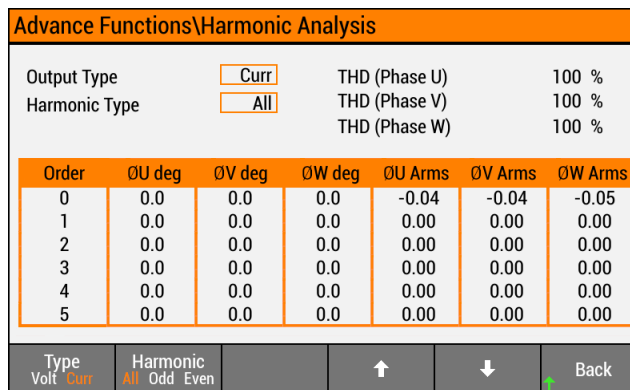


Figure 5. Analyze current or voltage harmonics up to 50<sup>th</sup> order

Built-in waveform generation

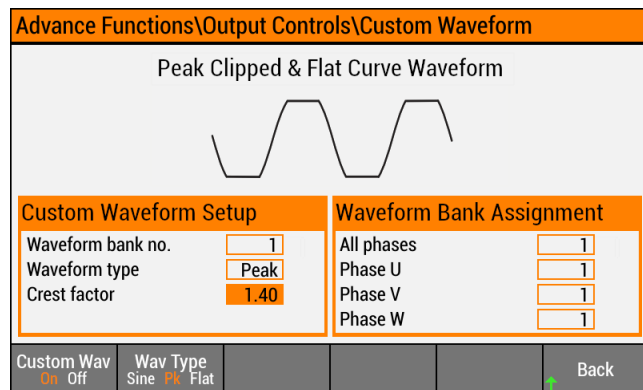


Figure 6. Generate sine wave, peak clipped and flat curve waveforms for cockpit electronics characterization

## Operate Remotely

Keysight's Pathwave BenchVue software for the PC enables you to operate the AC6900 Series remotely to:

- Track and record your AC outputs to understand the impact of events related to power draw.
- Facilitate harmonics measurement and analysis, providing the amplitude and phase of voltage and current waveforms.
- Capture and display power measurement as a waveform on the PC using the data log function.
- Export data quickly to a .csv file for further analysis.

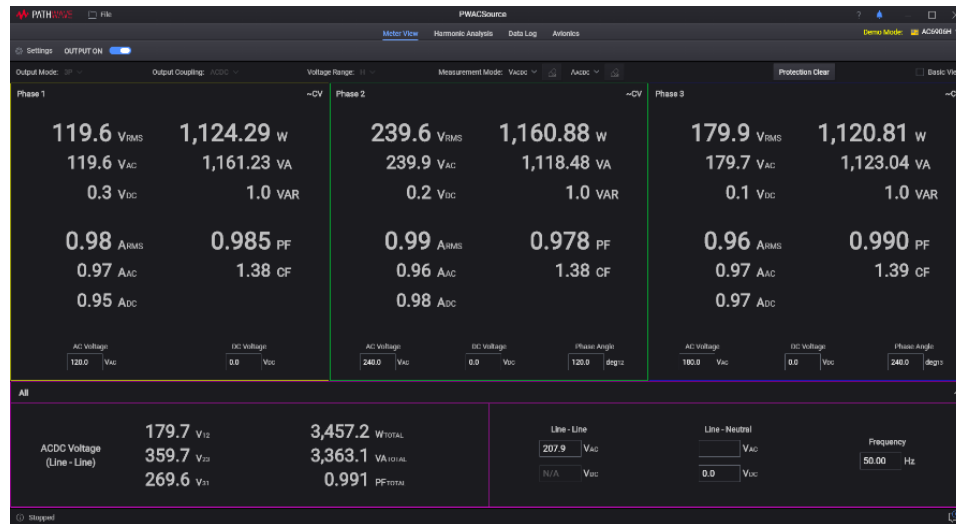


Figure 7. PathWave BenchVue AC source control software (BV0026B)

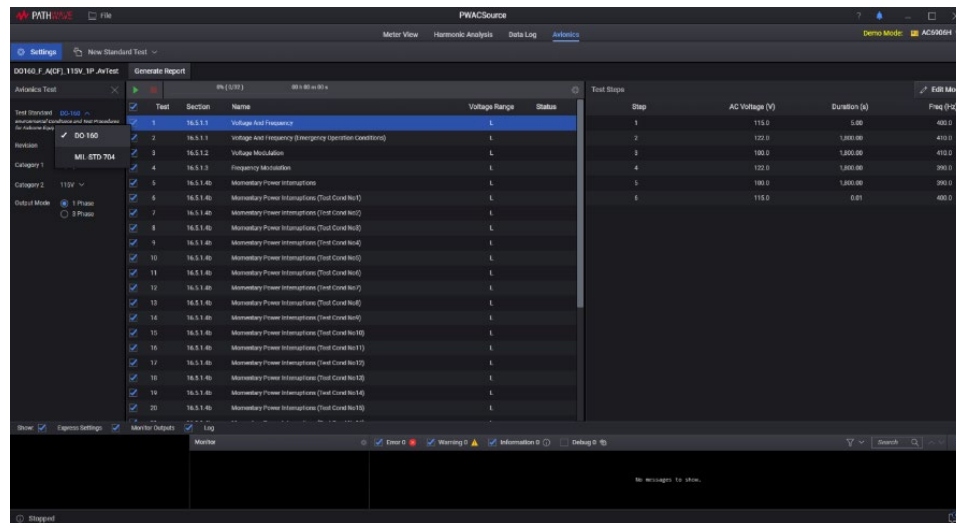


Figure 8. PathWave BenchVue AC source avionics standard test software (BV0028B)

## Specifications

Programming accuracy (at 23 °C ± 5 °C)	AC6903H 5 kHz AC6903L 550 Hz	AC6906H 5 kHz AC6906L 550 Hz	AC6912H 5 kHz AC6912L 550 Hz	AC6918H 5 kHz AC6918L 550 Hz
<b>Output AC<sup>1</sup></b>				
AC voltage <sup>2</sup> (L/H)	160 V / 320 V			
Setting range (L/H)	0.0 ~ 161.0 V / 0.0 ~ 322.0 V			
Resolution	0.1 V			
Accuracy <sup>3,4</sup> (L/H)	± (0.15% + 0.3 V) (45 Hz - 500 Hz) ± (1% + 0.3 V) / ± (1% + 0.6 V) (500 Hz - 5 kHz)			
Max rms current <sup>5</sup>				
1P	30 A / 15 A	60 A / 30 A	120 A / 60 A	180 A / 90 A
1P3W, 3P	10 A / 5 A	20 A / 10 A	40 A / 20 A	60 A / 30 A
Power capacity				
1P, 3P	3 kVA	6 kVA	12 kVA	18 kVA
1P3W	2 kVA	4 kVA	8 kVA	12 kVA
Load power factor	0 ~ 1 (leading or lagging)			
Frequency				
Range <sup>6</sup>	1Hz ~ 5kHz (5kHz -3dB, < 40Hz power de-rating is required)			
Resolution	0.01Hz (1.00Hz ~ 99.99Hz), 0.1Hz (100.0Hz ~ 999.9Hz), 1Hz (1kHz ~ 5kHz)			
Accuracy	± 0.01% temperature coefficient: ± 0.005%/°C			
Phase	1P (single-phase), 1P3W (single-phase three wire), 3P4W (three-phase four wire) switchable			
Resolution	0.1° (waveform bank 0 and 1 Hz ~ 500 Hz), 1° (500 Hz ~ 4 kHz), 2° (>4 kHz)			
Accuracy <sup>7</sup>	Within 120° ± (0.4° + fo × 0.9°); fo = output frequency (kHz)			
<b>Output DC<sup>1</sup></b>				
DC voltage <sup>8</sup> (L/H)	± 226 V / ± 452 V			
Setting range (L/H)	0 to ± 227.5 V / 0 to ± 455 V			
Resolution	0.1 V			
Accuracy	± (0.15% + 0.3V)			
Max current <sup>9</sup>	30 A / 15 A	60 A / 30 A	120 A / 60 A	180 A / 90 A
Power capacity	3 kW	6 kW	12 kW	18 kW

<sup>1</sup> Combined with AC and DC output, the peak voltage must be between -455 V to 455 V (H range) or -227.5 V to 227.5 V (L range).

<sup>2</sup> The specified guaranteed voltage range is 1 V to 160 V and 2 V to 320 V.

<sup>3</sup> At no load, the response is in *FAST* or *MID*, using the compensation function.

<sup>4</sup> At the phase angle of 120° for each phase for line voltage.

<sup>5</sup> When the output voltage is between 100 VAC and 160 VAC or 200 VAC and 320 VAC, the output voltage reduces the output current.  
When the

output frequency is between 1 Hz and 40 Hz, the output frequency reduces the output current. The output current is 70% at 1 Hz.

<sup>6</sup> L models – the frequency is 1 Hz to 550 Hz for three-phase output.

<sup>7</sup> Example: Performance of angle conversion at a given frequency within 120° ± 0.5° at 60 Hz output, within 120° ± 0.8° at 400Hz output.

<sup>8</sup> Guaranteed voltage range is 1.4 VDC to 226 VDC; 2.8 VDC to 452 VDC.

<sup>9</sup> When the output voltage is between 100 VDC and 200 VDC or 226 VDC and 452 VAC, the output voltage reduces the output current.

Measurement accuracy (at 23 °C ± 5 °C)	AC6903H 5 kHz AC6903L 550 Hz	AC6906H 5 kHz AC6906L 550 Hz	AC6912H 5 kHz AC6912L 550 Hz	AC6918H 5 kHz AC6918L 550 Hz
<b>Measurement</b>				
AC voltage resolution	0.1 V			
AC voltage accuracy	$\pm (0.03\% + 100 \text{ mV})$ (45 Hz ~ 100 Hz) $\pm (0.1\% + 100 \text{ mV})$ (100 Hz ~ 999.9 Hz) $\pm (0.5\% + 1 \text{ V})$ (1 kHz ~ 5 kHz)			
rms current resolution	0.01 A		0.1 A	
rms current accuracy <sup>1</sup>	$\pm (0.15\% + 0.2\% \text{ of fs})$ (45 Hz ~ 65 Hz) $\pm (0.5\% + 0.5\% \text{ of fs})$ (DC, 40 Hz ~ 999.9 Hz) $\pm (1.2\% + 1.2\% \text{ of fs})$ (1 kHz ~ 5 kHz)			
Peak current resolution	0.01 A		0.1 A	
Peak current accuracy <sup>2</sup>	4% of full scale			
Active power resolution	1 W		10 W	
Active power accuracy <sup>1 3</sup> (L/H)	$\pm (0.7\% + 0.7\% \text{ of fs} + 0.001\% \text{ of fs/V}) / \pm (0.7\% + 0.7\% \text{ of fs} + 0.0005\% \text{ of fs/V})$ (45 Hz ~ 100 Hz)			
Apparent power resolution	1 VA		10 VA	
Apparent power accuracy <sup>1 3</sup> (L/H)	$\pm (0.3\% + 0.3\% \text{ of fs} + 0.001\% \text{ of fs/V}) / \pm (0.3\% + 0.3\% \text{ of fs} + 0.0005\% \text{ of fs/V})$ (45 Hz ~ 100 Hz)			
Power factor resolution	0.01			
DC Voltage resolution	0.1V			
DC Voltage accuracy	0.05% + 150 mV			
<b>Output Stability</b>				
Line regulation <sup>4</sup>	$\pm 0.1\%$			
Load regulation <sup>5 6</sup> (L/H)				
$\leq 100\text{Hz}$	$\pm 0.1 \text{ V} / \pm 0.2 \text{ V}$			$\pm 0.2 \text{ V} / \pm 0.4 \text{ V}$
$\leq 500\text{Hz}$	$\pm 0.3 \text{ V} / \pm 0.6 \text{ V}$			$\pm 0.3 \text{ V} / \pm 0.6 \text{ V}$
$\leq 1\text{kHz}$	$\pm 1 \text{ V} / \pm 2 \text{ V}$			$\pm 1 \text{ V} / \pm 2 \text{ V}$
Total harmonic distortion <sup>6</sup>	0.3% ( $\leq 100 \text{ Hz}$ ), 0.5% ( $\leq 330 \text{ Hz}$ ), 1.5%/kHz ( $\leq 5 \text{ kHz}$ )			

<sup>1</sup> At 10 % to 100 % of maximum rated current; sine wave.

<sup>2</sup> Pulse height of sine wave.

<sup>3</sup> Power factor of 1.

<sup>4</sup> For input voltage changes within the rated range.

<sup>5</sup> For output current changes within 0 to 100 % of the rating when not using the compensation function.

<sup>6</sup> When the output phase voltage is 80 V – 160 V (L range) or 160 V – 320 V (H range), the load power factor is 1, and the response is FAST at the output terminal block

Supplemental characteristics	AC6903H 5 kHz AC6903L 550 Hz	AC6906H 5 kHz AC6906L 550 Hz	AC6912H 5 kHz AC6912L 550 Hz	AC6918H 5 kHz AC6918L 550 Hz		
<b>Output</b>						
Max peak current <sup>1</sup>	4 times the maximum output current					
Inrush current capacity	Current at 1.4 times the maximum output current for 0.5 s					
Temp coefficient <sup>2</sup>	100 ppm/°C					
Transient response <sup>3</sup>	40 μs (Fast)					
Response speed Tr/Tf <sup>4</sup>	40 μs (Fast), 100 μs (Medium), 300 μs (Slow)					
Ripple noise <sup>5</sup>	0.25 Vrms		0.3 Vrms	0.4 Vrms		
Variation according to output frequency <sup>6,7</sup>	Output voltage correction function enable: ± 0.3% (1 Hz~1 kHz), ± 10% (1001 Hz~5 kHz) Output voltage correction function disable: -3 dB (5 kHz)					
<b>Harmonics measurement</b>						
Fundamental frequency	10 Hz ~ 1 kHz					
Upper limit harmonic	5 <sup>th</sup> to 50 <sup>th</sup>					
Measurement items	Rms voltage and current / phase angle THD					
Current magnitude accuracy	0.15% + 0.20% of fs (Fundamental 50 Hz or 60 Hz) 1.2% + 1.2% of fs (Harmonics 2 <sup>nd</sup> to 50 <sup>th</sup> )					
<b>Output Impedance</b>						
<b>1P</b>						
L	Resistance	0 Ω to 667 mΩ	0 Ω to 333 mΩ	0 Ω to 167 mΩ	0 Ω to 111 mΩ	
	Reactance	Fast	15 μH to 667 μH	7 μH to 333 μH	3 μH to 167 μH	2 μH to 111 μH
		Med	27 μH to 667 μH	13 μH to 333 μH	7 μH to 167 μH	4 μH to 111 μH
Slow		80 μH to 667 μH	40 μH to 333 μH	20 μH to 167 μH	13 μH to 111 μH	
H	Resistance	0 Ω to 2667 mΩ	0 Ω to 1333 mΩ	0 Ω to 667 mΩ	0 Ω to 444 mΩ	
	Reactance	Fast	55 μH to 2667 μH	27 μH to 1333 μH	13 μH to 667 μH	9 μH to 444 μH
		Med	107 μH to 2667 μH	53 μH to 1333 μH	27 μH to 667 μH	18 μH to 444 μH
Slow		320 μH to 2667 μH	160 μH to 1333 μH	80 μH to 667 μH	53 μH to 444 μH	
<b>1P3W/3P</b>						
L	Resistance	0 Ω to 2000 mΩ	0 Ω to 1000 mΩ	0 Ω to 500 mΩ	0 Ω to 333 mΩ	
	Reactance	Fast	40 μH to 2000 μH	20 μH to 1000 μH	10 μH to 500 μH	7 μH to 333 μH
		Med	80 μH to 2000 μH	40 μH to 1000 μH	20 μH to 500 μH	13 μH to 333 μH
Slow		240 μH to 2000 μH	120 μH to 1000 μH	60 μH to 500 μH	40 μH to 333 μH	
H	Resistance	0 Ω to 8000 mΩ	0 Ω to 4000 mΩ	0 Ω to 2000 mΩ	0 Ω to 1333 mΩ	
	Reactance	Fast	160 μH to 8000 μH	80 μH to 4000 μH	40 μH to 2000 μH	27 μH to 1333 μH
		Med	320 μH to 8000 μH	160 μH to 4000 μH	80 μH to 2000 μH	53 μH to 1333 μH
Slow		960 μH to 8000 μH	480 μH to 4000 μH	240 μH to 2000 μH	160 μH to 1333 μH	

<sup>1</sup> Repeated output is possible when the crest factor is four.

<sup>2</sup> For changes within the operating temperature range at output phase voltage 100 V / 200 V; no load.

<sup>3</sup> When the output voltage is 100 V / 200 V, the load pf is 1, the output current changes from 0 A to the rated value and from the rated value to 0 A.

<sup>4</sup> At 10 % to 90 % of the output voltage.

<sup>5</sup> 5 Hz to 1 MHz components are in DC mode.

<sup>6</sup> The voltage variation over 40 Hz to 5 kHz in AC mode with 55 Hz as the reference.

<sup>7</sup> When the output phase voltage is 80 V to 160 V (L range) or 160 V to 320 V (H range), the load power factor is 1, and the response is FAST.



Supplemental characteristics	AC6903H 5 kHz AC6903L 550 Hz	AC6906H 5 kHz AC6906L 550 Hz	AC6912H 5 kHz AC6912L 550 Hz	AC6918H 5 kHz AC6918L 550 Hz
<b>Output On/Off phase angle setting</b>				
Setting range	0.0 degrees to 360.0 degrees (0.0 degrees = 360.0 degrees)			
Resolution	0.1 degrees			
Accuracy <sup>1</sup>	± 1 degrees (≤1 kHz)			
<b>Input</b>				
Apparent power	≤4 kVA	≤7.8 kVA	≤15.6 kVA	≤23.4 kVA
Power factor <sup>2</sup>	0.95 (TYP)			
Efficiency <sup>2</sup>	85% (TYP)			
Hold-up time for power interruption <sup>2</sup>	10 ms			
Frequency (nominal)	50 ~ 60 Hz			
Frequency (variation)	45 ~ 65 Hz			
<b>200V input model</b>				
Voltage (nominal)	100 to 120 Vrms / 200 to 240 Vrms	200 to 230 Vrms		
Voltage (variation)	-	170 to 250 Vrms		
Phase	1P	3P3W		
Max input current (rms) <sup>3</sup>	48 A / 24 A	27 A	53 A	80 A
Protective conductor current <sup>4</sup>	-	≤10 mA	≤15 mA	≤20 mA
<b>400V input model</b>				
Voltage (nominal)	-	380 to 480 Vrms		
Voltage (variation)	-	323 to 519 Vrms		
Phase	-	3P4W		
Max input current (rms) <sup>3</sup>	-	14 A	28 A	42 A
Protective conductor current	-	≤3.5 mA	≤3.5 mA	≤3.5 mA
<b>Mechanical</b>				
Net weight (200V / 400V) (kg)	23	47 / 49	71 / 72	104 / 106
Net Dimension, W x H x D (mm)	430 x 150 x 655	430 x 262 x 562	430 x 389 x 562	430 x 563 x 562
Overall Dimension (with wheel and safety cover), W x H x D (mm)	NA	445 x 345 x 650	445 x 475 x 650	445 x 660 x 665
Input terminal	M6	M5	M5	M8 (200V input) M5 (400V input)
Output terminal	M6	M5	M5	M6

<sup>1</sup> Lag in phase due to response speed not included.

<sup>2</sup> Output voltage at 100 V/200 V, rated output current, sine wave, load power factor 1, output frequency 40 Hz to 1 kHz.

<sup>3</sup> The current at the minimum voltage within the allowable variation range.

<sup>4</sup> Output voltage at 100 V/200 V, rated output current, sine wave, load power factor 1, output frequency 45 Hz to 65 Hz.



General	All models
Insulation resistance: Primary-to-chassis Output-to-chassis Primary-to-output	500 Vdc, 10 MΩ or more
Withstand voltage: Primary-to-chassis Output-to-chassis Primary-to-output	1500 Vac, 2150 Vdc, 1 minute
Isolation to ground	320 Vrms / 452 Vdc
Electromagnetic compatibility (EMC)	Complies with requirements for the following directive and standards: EMC Directive 2014/30/EU EN 61326-1 (Class A <sup>1</sup> ), EN 55011 (Class A <sup>1</sup> , Group 1 <sup>2</sup> ) Applicable under the following conditions: The maximum length of all cabling and wiring connected to the product must be <3 m (< 9.8 feet); excluding the cable which connects to the LAN
Safety	Complies with the requirements of the following directive and standards: Low voltage directive 2014/35/EU <sup>1</sup> EN 61010-1 (Class I <sup>3</sup> , Pollution Degree 2 <sup>4</sup> )
<b>Environmental conditions</b>	
Operating environment	Indoor use, overvoltage category II
Operating temperature range	0 to 50°C (32°F to 122°F)
Storage temperature range	-10 to +60°C (14°F to 140°F)
Operating humidity range	20% RH to 80% RH (no condensation)
Storage humidity range	90% RH or less (no condensation)
Altitude	Up to 2000 m (6561.7 feet)

<sup>1</sup> This is a Class A instrument. The intended use for this product is in an industrial environment. This product may cause interference if used in residential areas. Avoid residential use unless the user takes special measures to reduce electromagnetic emissions to prevent interference to the reception of radio and television broadcasts.

<sup>2</sup> This is a Group 1 instrument. This product does not generate and / or use radio frequency energy in the form of electromagnetic radiation, inductive and / or capacitive coupling for the treatment of material, or inspection / analysis purposes.

<sup>3</sup> This product conforms to Class I. For safety reasons, be sure to ground the protective conductor terminal of this product.

<sup>4</sup> Pollution in addition to foreign matter (solid, liquid, or gaseous) may produce a reduction of dielectric strength or surface resistivity. Pollution Degree 2 assumes only non-conductive pollution will occur except for an occasional temporary conductivity caused by condensation.



## Ordering Information

### Keysight AC6900 series three-phase AC power sources

Model	Description
AC6903H	AC power source 320Vrms, 3kVA, 5kHz, 3Φ
AC6903L	AC power source 320Vrms, 3kVA, 550Hz, 3Φ
AC6906H	AC power source 320Vrms, 6kVA, 5kHz, 3Φ
AC6906L	AC power source 320Vrms, 6kVA, 550Hz, 3Φ
AC6912H	AC power source 320Vrms, 12kVA, 5kHz, 3Φ
AC6912L	AC power source 320Vrms, 12kVA, 550Hz, 3Φ
AC6918H	AC power source 320Vrms, 18kVA, 5kHz, 3Φ
AC6918L	AC power source 320Vrms, 18kVA, 550Hz, 3Φ
BV0026B	PathWave BenchVue AC source control software
BV0028B	PathWave BenchVue AC source avionics standard test software

### Standalone accessories

Model	Description
AC69GPBU	GPIB interface board
AC69ALGU	Analog interface connector
AC69DIGU	Digital interface connector
AC69PAR1	Parallel operation cable
AC69SYN1	Synchronization cable

### Options

Model	Input Option	Line Cord	Rack Kit
AC6903L/H	NA	AC69PW32	AC68BRAC3
AC6906L/H	200	AC69PW62	AC69RAC6
	400	AC69PW64	
AC6912L/H	200	AC69PW122	AC69RAC12
	400	AC69PW64	
AC6918L/H	200	AC69PW182	AC69RAC18
	400	AC69PW184	

[www.keysight.com/find/acsource](http://www.keysight.com/find/acsource)

Learn more at: [www.keysight.com](http://www.keysight.com)

For more information on Keysight Technologies' products, applications or services, please contact your local Keysight office. The complete list is available at: [www.keysight.com/find/contactus](http://www.keysight.com/find/contactus)

